

LIGNUM BIOSEL

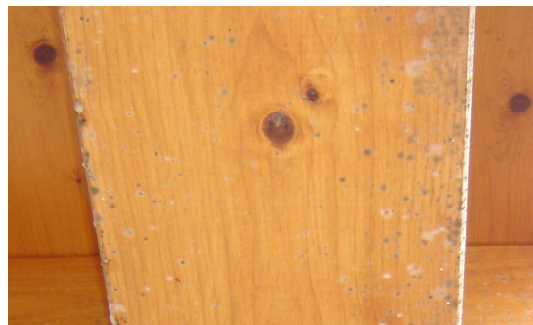
MOULD REMOVER FOR WOOD



PERFECT FOR ALL
TYPES OF WOOD.

COVERAGE

It can vary depending
on stains removal to be
carried out.



TYPICAL USE

- Lignum Biosel is a Sodium hypochlorite based detergent, **ideal to remove mould** from wood.

BENEFITS

- Perfect **for all types of wooden surfaces** showing attacks from mould.
- Extremely **easy to use**.
- This product **acts quickly** and doesn't require any strong mechanical action.
- It does **not make the wood fibre lift up**.

APPLICATION METHOD

The product is **ready to use**.

Before the application:

- The **tools** must be **clean** and **dry**.
- A **test** is always recommended before proceeding with application.

Application tools:

Sponge, paint brush.

Application:

- Apply the product on the stains and let it act a few minutes.
- Remove the product with a moistened sponge.
- Repeat the application, if necessary.

sary.

- Use a sponge to remove residues of mildew.

Tools cleaning:

Rinse well with water the tools.

HDG Group S.r.l.

Viale Grazia Verdi, 3 Loc. SISSA
43018 SISSA TRECASALI (PR) ITALY
Ph. +39 0521 379085
Fax +39 0521 877338
www.hdg.it

WARNINGS

- It can be aggressive towards pre-existing treatments.
- Do not apply on metals and materials other than wood in general. Do not mix it with others products: hazardous gases may be produced.
- **Use with caution on wood species rich of tannin:** remove the product immediately after application to prevent the extraction of tannin. If necessary, repeat the process several times.

STORAGE

Store the product in original container, tightly closed, in a cool and ventilated place, away from heat sources and incompatible substances (ammonia, ammonium salts, acids, reducing substances, metals and others alloys). Storage temperature: between +10 °C and +20 °C. Shelf-life: 12 months from manufacture (see batch label on packaging).

LABELLING

Signal words

Danger

Hazard statements

Causes severe skin burns and eye damage. Very toxic to aquatic life. Toxic to aquatic life with long lasting effects. Contact with acids liberates toxic gas. Warning! Do not use together with other products. May release dangerous gases (chlorine).

Precautionary statements

Keep out of reach of children. Do not breathe mist / vapours / spray. IF IN EYES: Rinse cautiously with water for several minutes. Remove contact lenses, if present and easy to do. Continue rinsing. IF ON SKIN (or hair): Take off immediately all contaminated clothing. Rinse skin with water [or shower]. Wear protective gloves/protective clothing/eye protection/face protection. Immediately call a POISON CENTER or a doctor. Contains: SODIUM HYPOCHLORITE.

Composition EC Reg. 648/2004: 5 % or over but less than 15 % chlorine-based bleaching agents.



PACK SIZE

- Bottle PE 1 litre (case pack 12 units)
- Tank PE 5 litres (case pack 4 units)
- Tank PE 20 litres (pallet 36 units)

Transport packaging consists of **ECO-SUSTAINABLE PALLETS** (with certification of use of wood sourced from PEFC-certified forests).

TECHNICAL DATA

Aspect: liquid

Colour: light yellow

Odour: characteristic

Relative density: 1,15 g/ml

pH: 13.00 (a 20°C)

Solubility: completely miscible in water; insoluble in organic solvents.

Melting point/freezing point: about -6°C

This information is the result of our broadest scientific and operational experience to obtain the best results on the specific job. However, this information is not binding and does not imply our contractual responsibility, nor an accessory obligation with the contract of sale. It does not exempt the purchaser from their responsibility to personally test our products as to their suitability for their intended use. The information provided on this sheet is based on our current knowledge and, in case of changes due to new technologies and/or developments in the sector, it will be modified. Therefore, the Customer is obliged to verify that this sheet has not become obsolete as a result of being replaced by subsequent versions. If in doubt, contact our Technical Office.